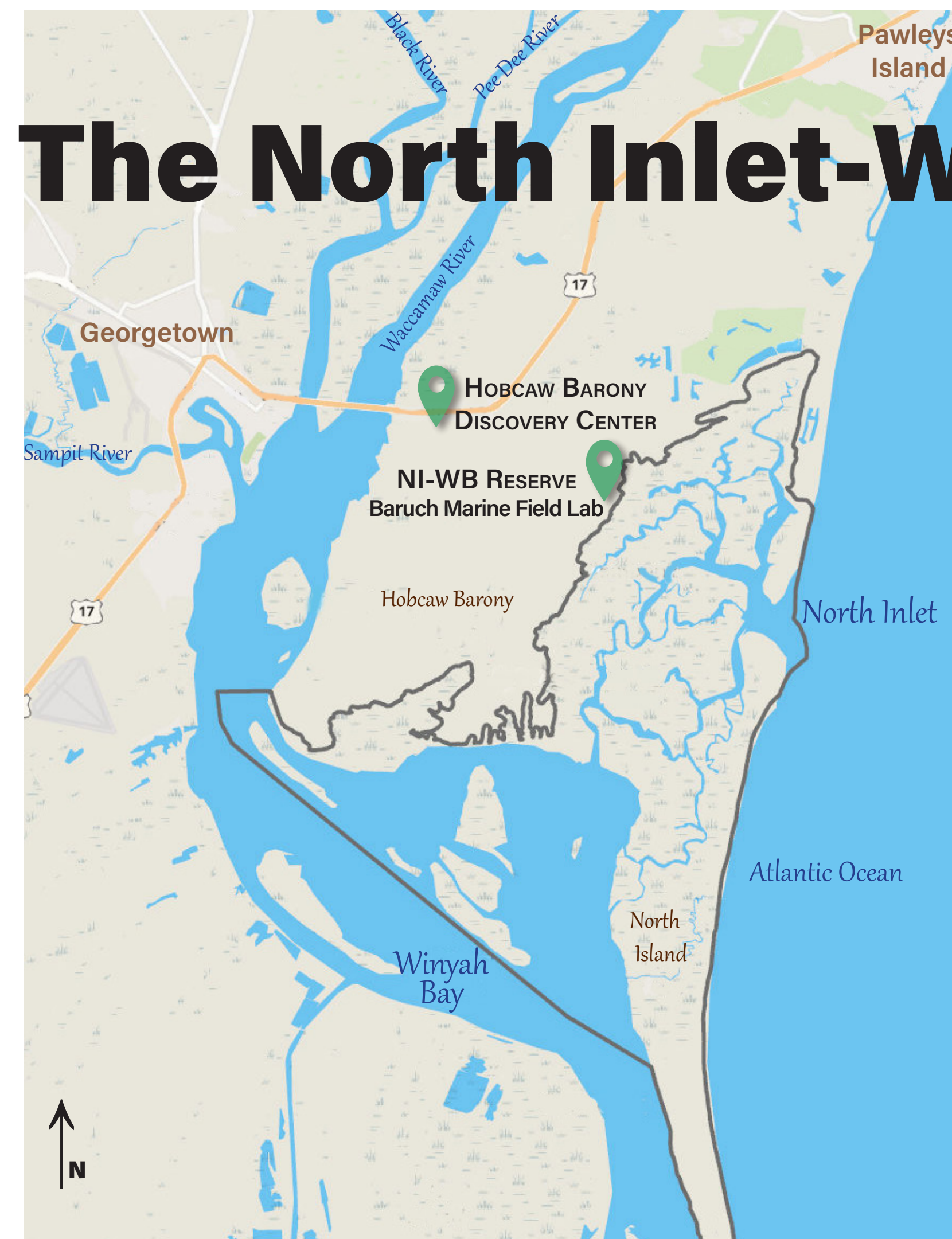


# The North Inlet-Winyah Bay National Estuarine Research Reserve

[www.northinlet.sc.edu](http://www.northinlet.sc.edu)



Located in Georgetown, South Carolina, the Reserve includes North Inlet and lower Winyah Bay and encompasses over 18,000 acres of tidal marshes, oyster reefs, beaches, coastal forest, and open water.



The Reserve conducts scientific research and provides education programs needed by South Carolina's coastal counties and the nation to conserve and manage coastal resources. Annually, more than 80 different projects are conducted in the Reserve and over 15,000 people visit and participate in educational programs.



The Reserve is a State-Federal partnership between the University of South Carolina and the National Oceanic and Atmospheric Administration (NOAA) and operates in coordination with the private, non-profit Belle W. Baruch Foundation, which owns and manages Hobcaw Barony where the reserve is located. The University's Baruch Marine Field Laboratory is responsible for the day-to-day operation of the Reserve, while NOAA provides federal funding, national guidance and technical assistance.

*A partnership*



## ...is a part of a National Estuarine Research Reserve System

The National Estuarine Research Reserve System is a network of 29 coastal sites established by the Coastal Zone Management Act and designated to protect and study estuarine systems. Reserves participate in national monitoring, research and education programs, as well as leading local research, restoration and protection initiatives and community-based stewardship projects.



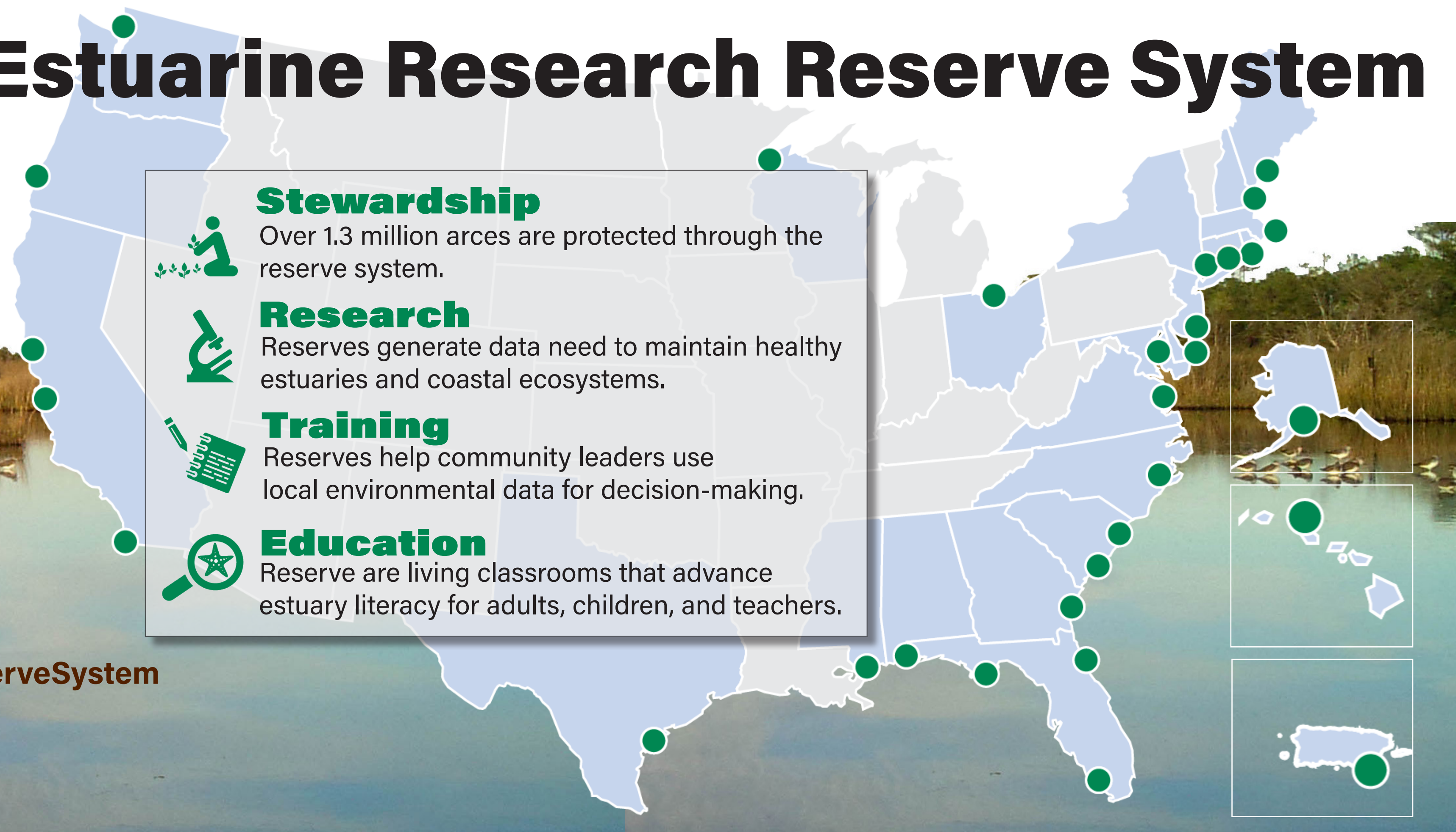
**Learn more:**  
 about the North Inlet-Winyah Bay Reserve  
 ⇒ [northinlet.sc.edu](http://northinlet.sc.edu)  
 about the National Estuarine Research Reserve System  
 ⇒ [coast.noaa.gov/nerrs/](http://coast.noaa.gov/nerrs/)  
 about the NERR Association  
 ⇒ [nerra.org](http://nerra.org)

**Stewardship**  
Over 1.3 million acres are protected through the reserve system.

**Research**  
Reserves generate data need to maintain healthy estuaries and coastal ecosystems.

**Training**  
Reserves help community leaders use local environmental data for decision-making.

**Education**  
Reserve are living classrooms that advance estuary literacy for adults, children, and teachers.



Resilient estuaries and coastal watersheds, where human and natural communities thrive.