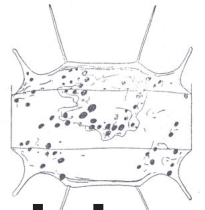
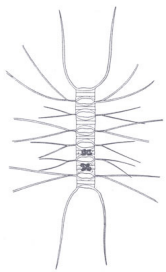


BE A PART OF THE NETWORK



Phytoplankton Monitor Volunteer Training

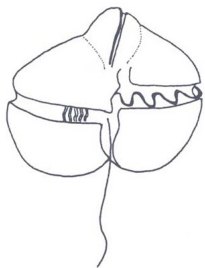
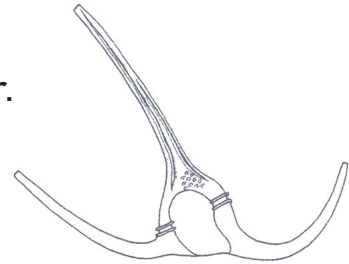
The National [Phytoplankton Monitoring Network](#) (PMN) is a community-based network of volunteers that monitor marine phytoplankton and harmful algal blooms (HABs). The PMN enhances the Nation's ability to respond to and manage the growing threat posed by HABs by collecting important data on species composition and distribution in coastal waters and creating working relationships between volunteers and professional marine biotoxin researchers.



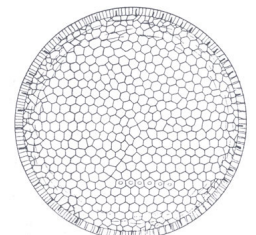
PMN volunteers are an asset to the community through knowledge gained and shared. Volunteers are the primary investigators for the local waters and directly contribute to a greater understanding of when and where potential harmful algal blooms may be occurring.

Volunteers are Needed to

- Collect samples twice monthly from a local dock or pier.
- Record environmental observations.
- Examine samples for the presence of HAB species.
- Report findings to the national database.



Training Session
Friday, July 22nd
2 to 4 PM
North Inlet-Winyah Bay Reserve



Register at northinlet.sc.edu/events/phytoplankton



Questions? Contact Jen Plunket, Stewardship Coordinator, jen@baruch.sc.edu