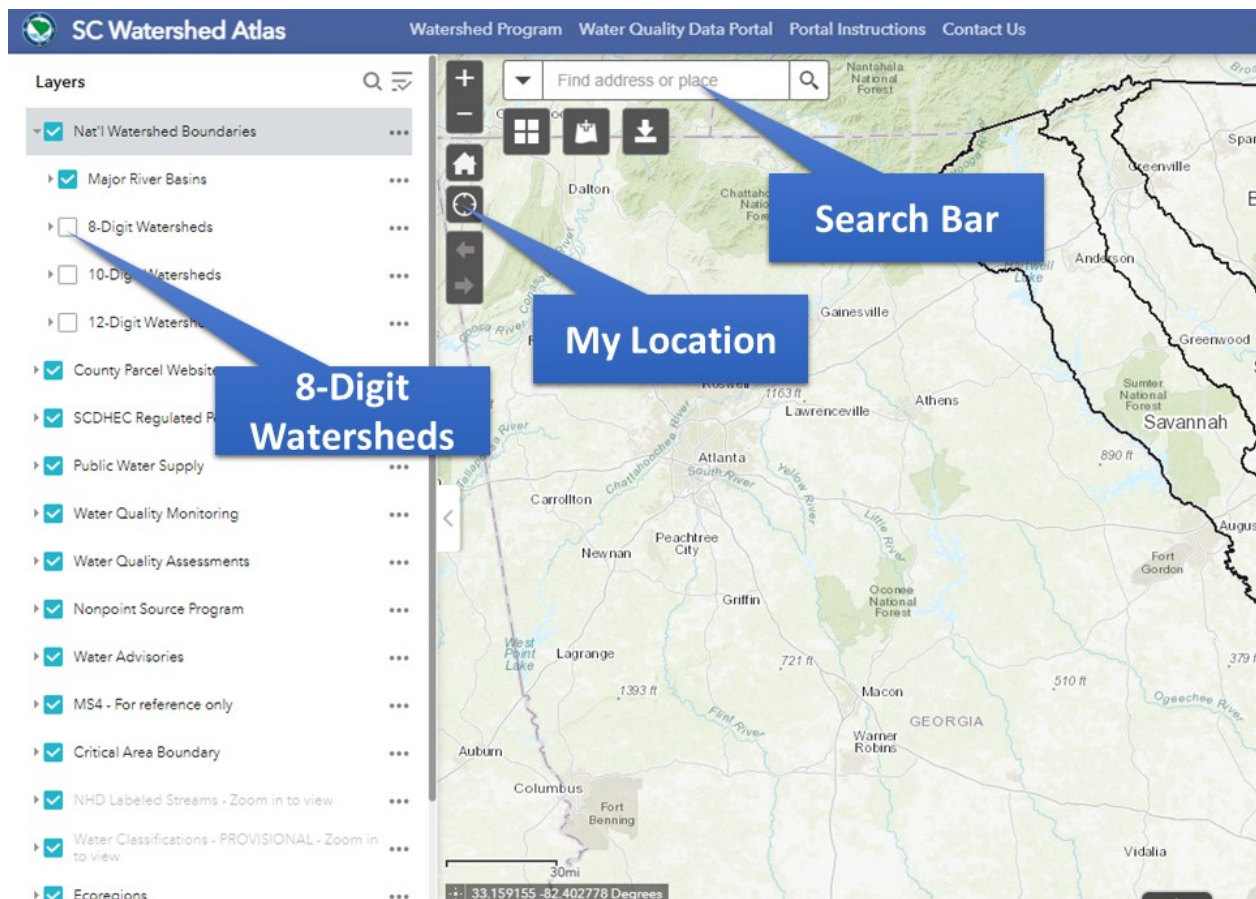
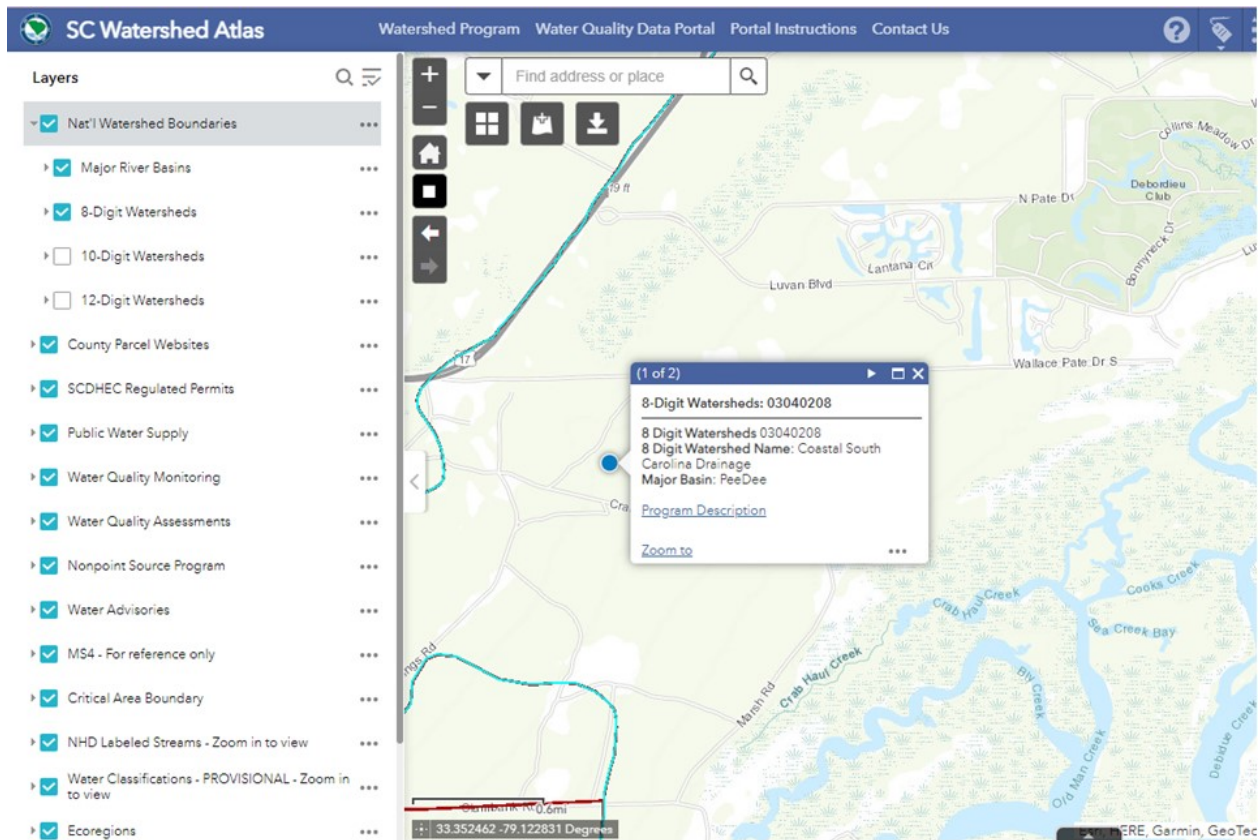


Watershed Atlas Activity

Find your Watershed

1. Visit the SC Watershed Atlas at <https://gis.dhec.sc.gov/watersheds/>
2. Navigate to your address by either using the My Location tool or typing the address into the search bar.
3. Open the National Watershed Boundaries layer.
4. Click to select the 8-Digit Watersheds box.
5. Click on the map anywhere near your address to open a pop-up box with your watershed information.



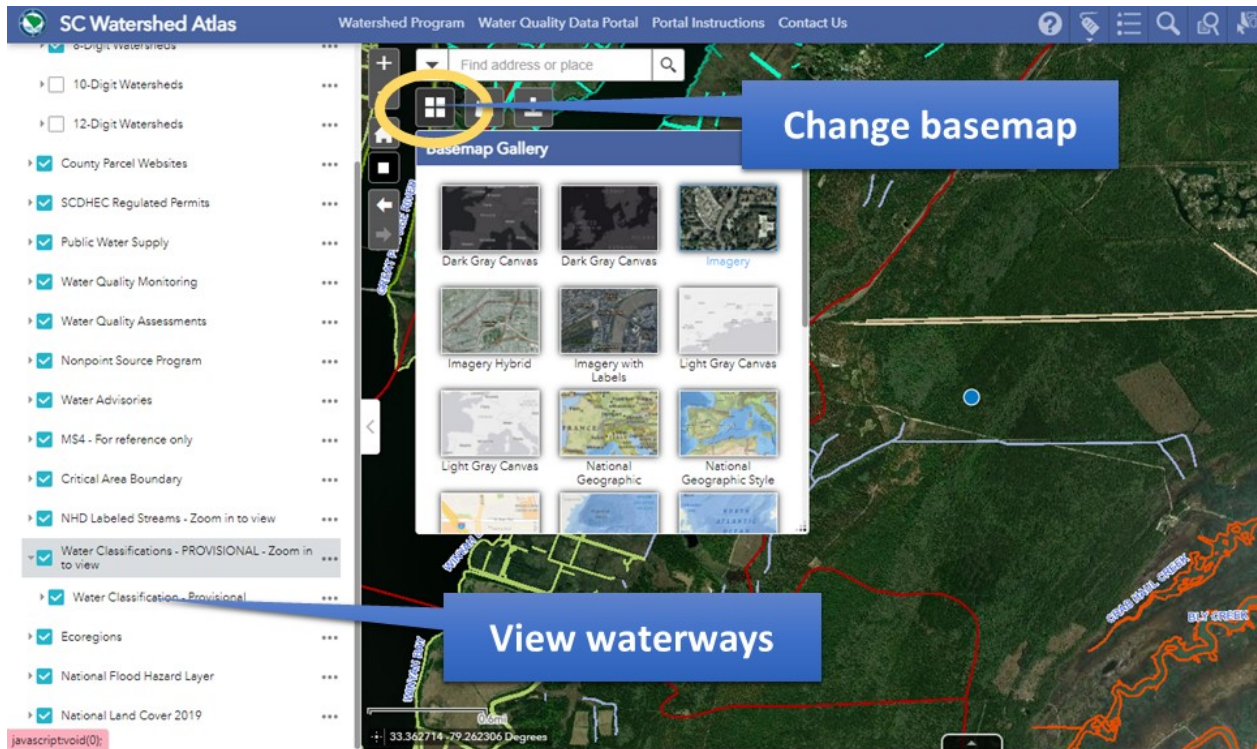


1. What is the 8-digit watershed name for your location?

2. In which major drainage basin is it located?

Explore Waterways

1. Turn on the 'Water Classification- Provisional' layer to view the waterways near your location.
2. Changing the base map to imagery may help you to see the waterways.

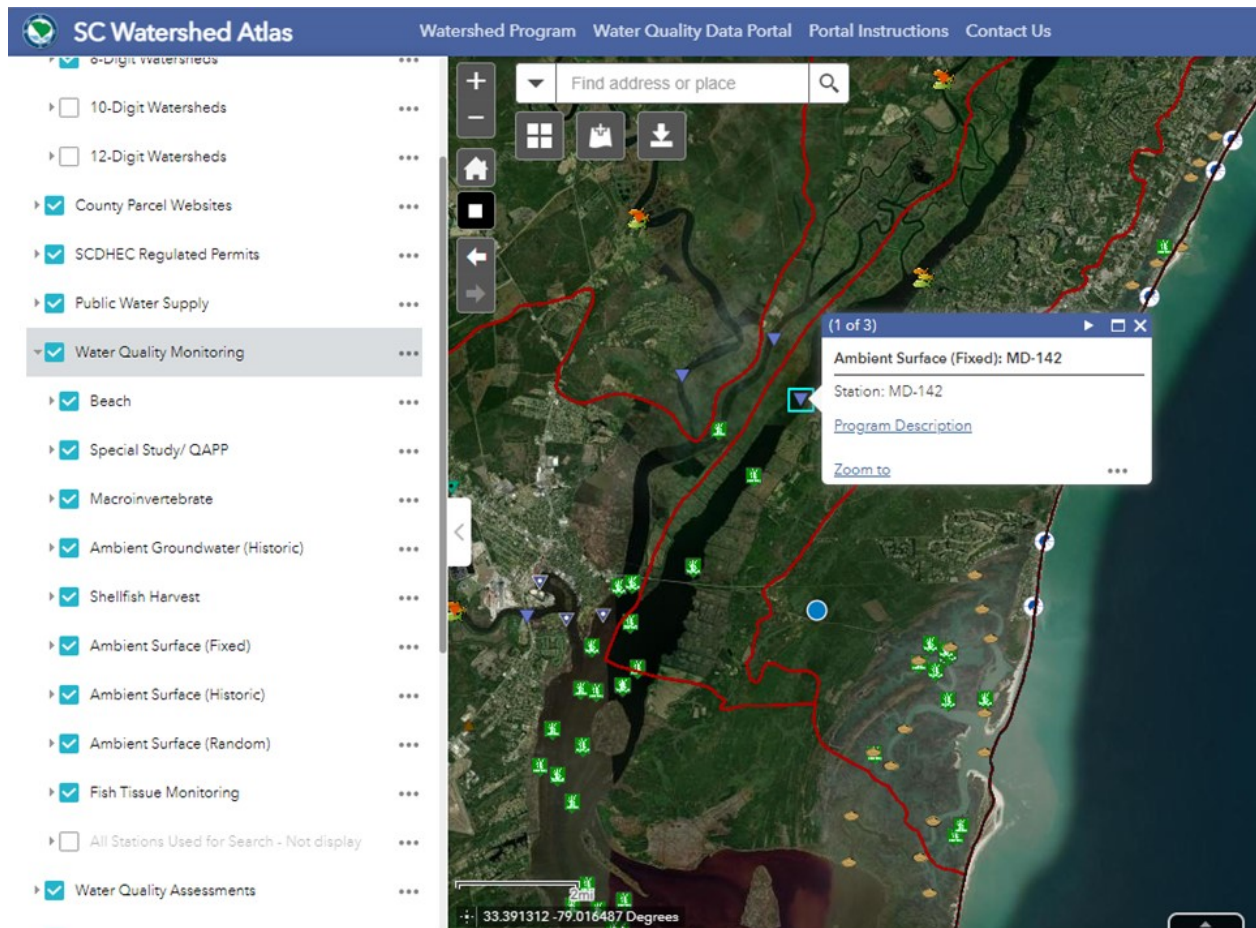


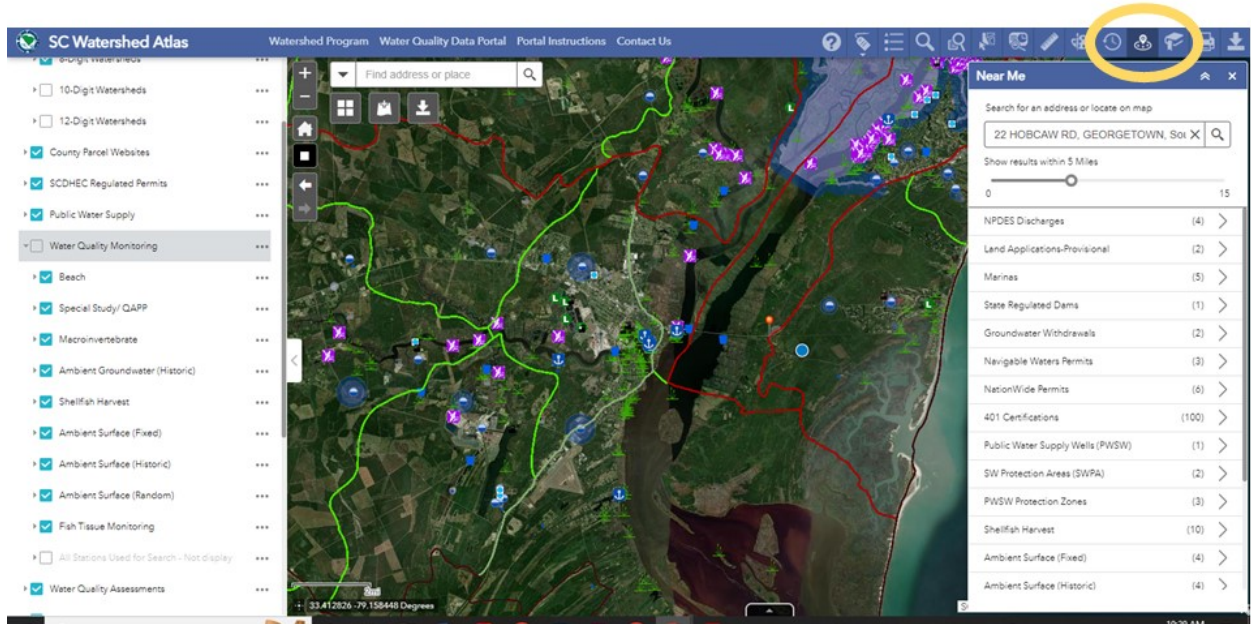
3. What is the name of a waterway near your location?

4. What type of waterway is it?

Monitoring Stations and Permits

1. Select the 'Water Quality Monitoring' layer. There are a number of different monitoring programs listed. You can select them all to see what types of monitoring are occurring in your areas. Clicking on a symbol in the map will show a pop-up with more information about the station.
2. You can see all of the permits, projects and features in your area by using the 'Near Me' function. Enter your address and select a buffer area using the slider. You may want to turn off the 'Water Quality Monitoring' layer.





5. What type of monitoring stations are near your location?

6. Are there and NPDES discharge permits within 10 miles of your location?

This content is neither created nor endorsed by Google.

Google Forms